

F21-E2

INDUSTRIAL

Radio Remote Controller

Compact Ergonomic Design

Safe / Durable / Reliable

PLL Circuit

- Multi-Channel Selection
- Interference free

Ergonomic Transmitter

- Compact & Handy transmitter

CRC & Hamming Technology

- Enhanced encoding and decoding

Internal Antenna

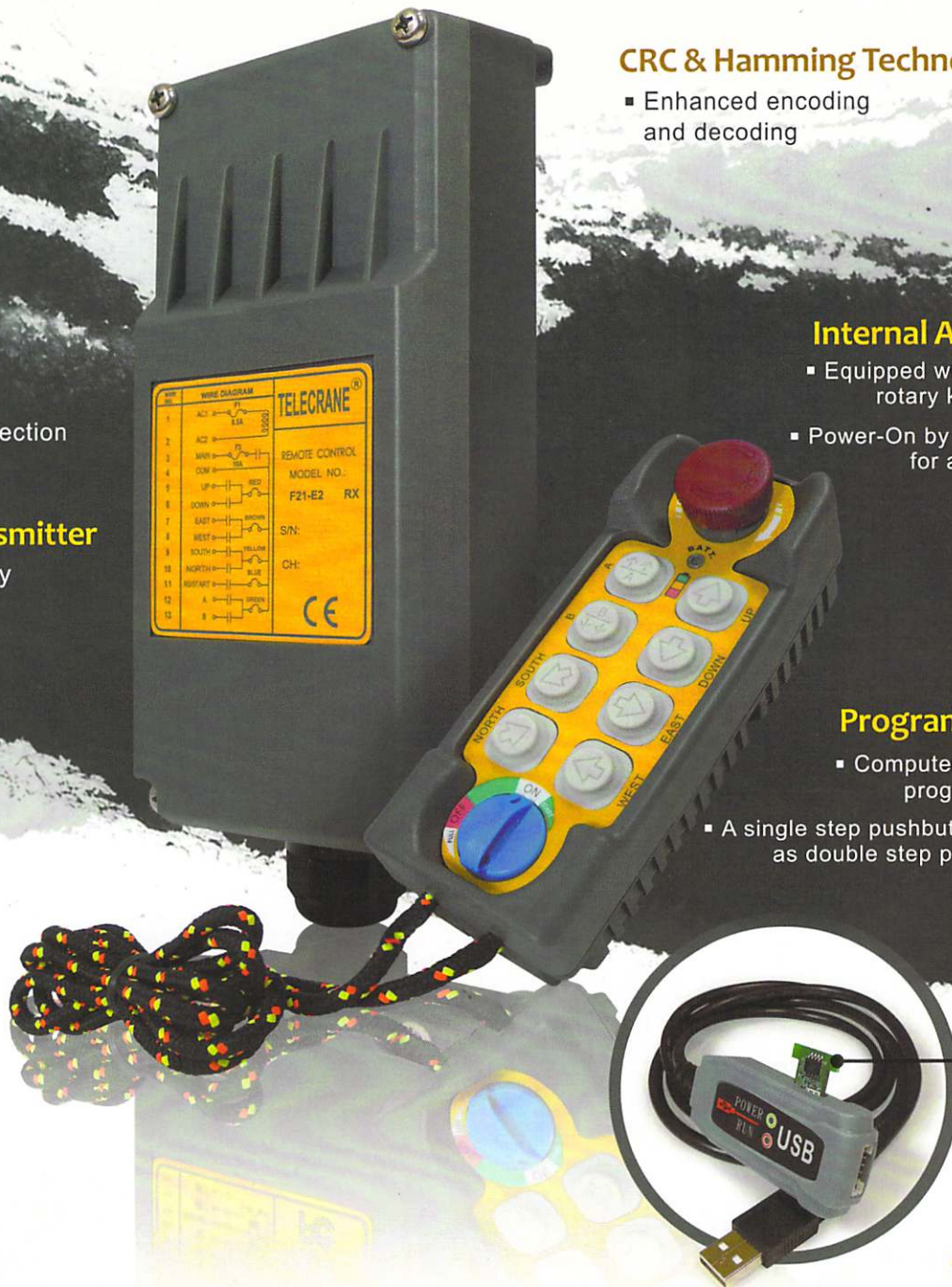
- Equipped with EMS & rotary key switch
- Power-On by password for authorized operation

Programmable

- Computer software programmable
- A single step pushbutton works as double step pushbutton

e-Card

- USB Interface
- Plug & Play, just like SIM card
- e-Card duplicate via transmitter



 **TELECRANE**[®]
www.telecrane.com.tw



F21-E2

Durable / Safe / Reliable / Economic
Industrial Radio Remote Controller

TELECRANE®

Specification

General Operating Range : Up to 100 Meters
 Temperature Range : - 40°C ~ +85°C
 ID code : 32 Bits ID Code with 4.3 Billion Sets Available (never repeated)
 Hamming Distance : ≥ 4

Transmitter Power Supply : Two 1.5 volts (AA Size) Alkaline / Rechargeable Batteries
 RF Power : < 10 mW
 Pushbutton : 1 EMS Button / 1 Rotary Key Switch
 8 Single step Button (UP / DOWN buttons are programmable as double speed through software)
 Dimensions : 132 x 55 x 40 mm.
 Weight : 220g (including batteries)



Receiver Power Supply : 24/48、48/110、48/220、110/220、220/380 VAC (50 / 60 Hz), 12-24 VDC.

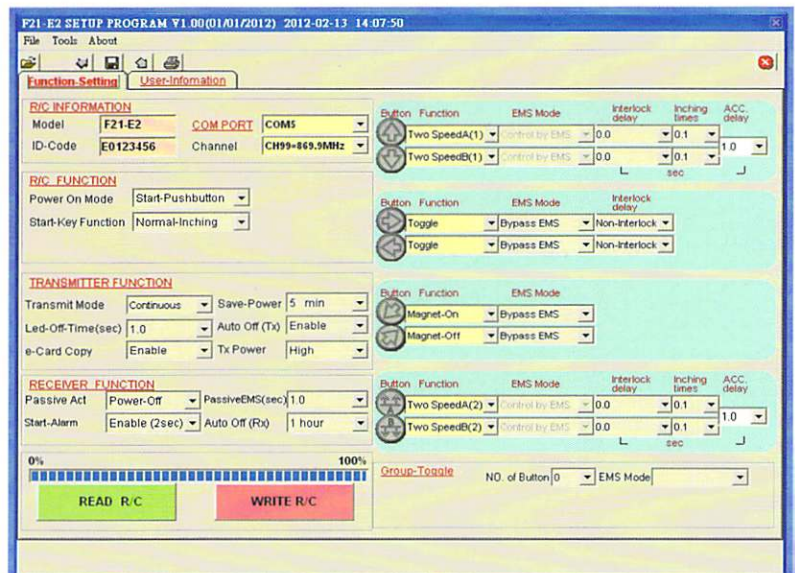
Dimensions : 190 x 85 x 62 mm.

Weight : 950g (including cable)



Function Setting Software

To meet variety application requirements, F21-E2 software provides multi-function setting such as pushbutton in Normal (Momentary), Toggle, Magnetic, ON/OFF, and Interlock/Non-interlock modes.



Optional accessories

Software CD & USB interface cable



Visit our website >>

www.telecrane.com.tw